



**21 Woodhurst South, Ray Mead Road, Maidenhead, SL6 8NZ**  
**£495,000 Share of Freehold**

CHAIN FREE. Set in a sought-after riverside location, this delightful two bedroomed apartment offers a unique blend of tranquil waterside living, with access to well-maintained communal gardens, a heated swimming pool, and a private tennis court.

### **Security Entryphone System**

Door giving access to stairs and lift, well-kept communal space, front door to

### **Entrance Hall**

Storage cupboard, glazed double doors leading to

### **Living/Dining Room**

Double-glazed sliding doors providing access to a balcony with River Thames views

### **Kitchen**

Comprising range of wall and base cupboards and drawers, work surfaces incorporating stainless steel sink, tiled splashback, integrated fridge/freezer and oven, gas hob, space for washing machine, tiled flooring

### **Bathroom**

WC, wash hand basin set into a unit with mirrored cabinet over, tiled panelled bath with shower unit over, heated towel rail, tiled flooring

### **Bedroom 1**

Double aspect with river views, built in double wardrobes

### **Bedroom 2**

Built in double wardrobes

### **Outside**

Extensive communal grounds lay to the rear of the property with residents having access to both the communal pool and tennis court, private gated parking

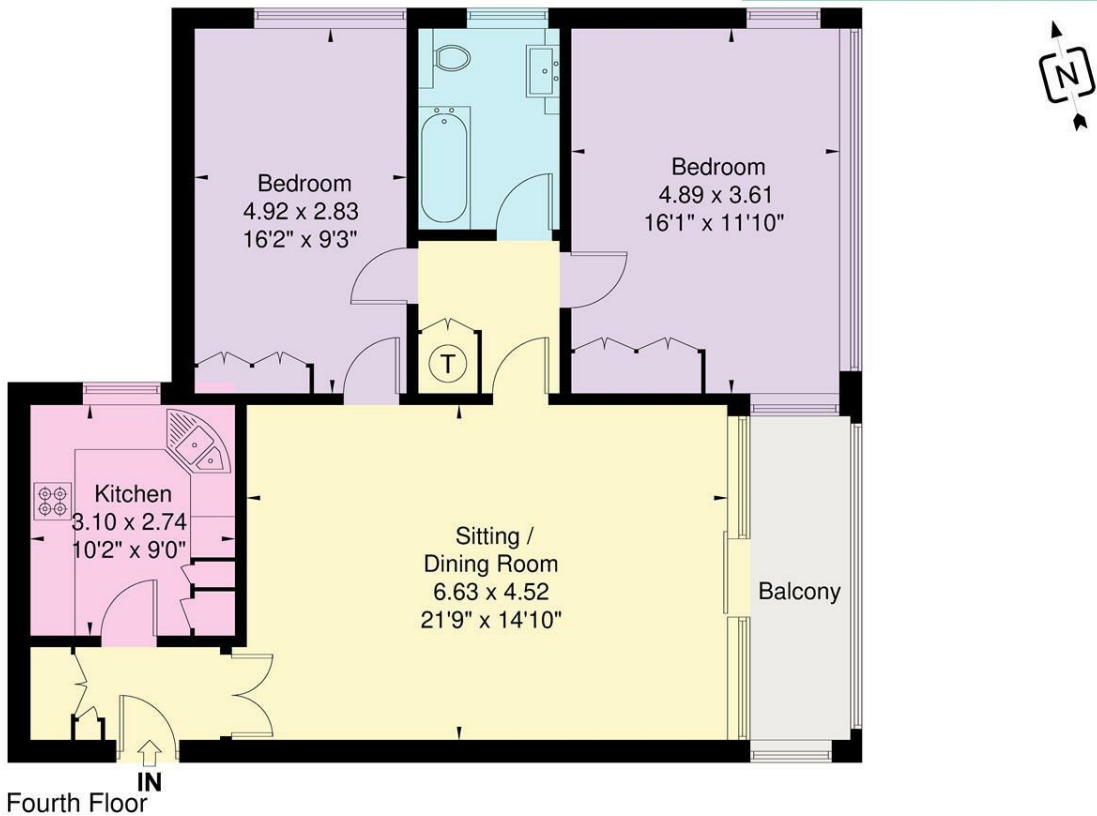


Floor Plan

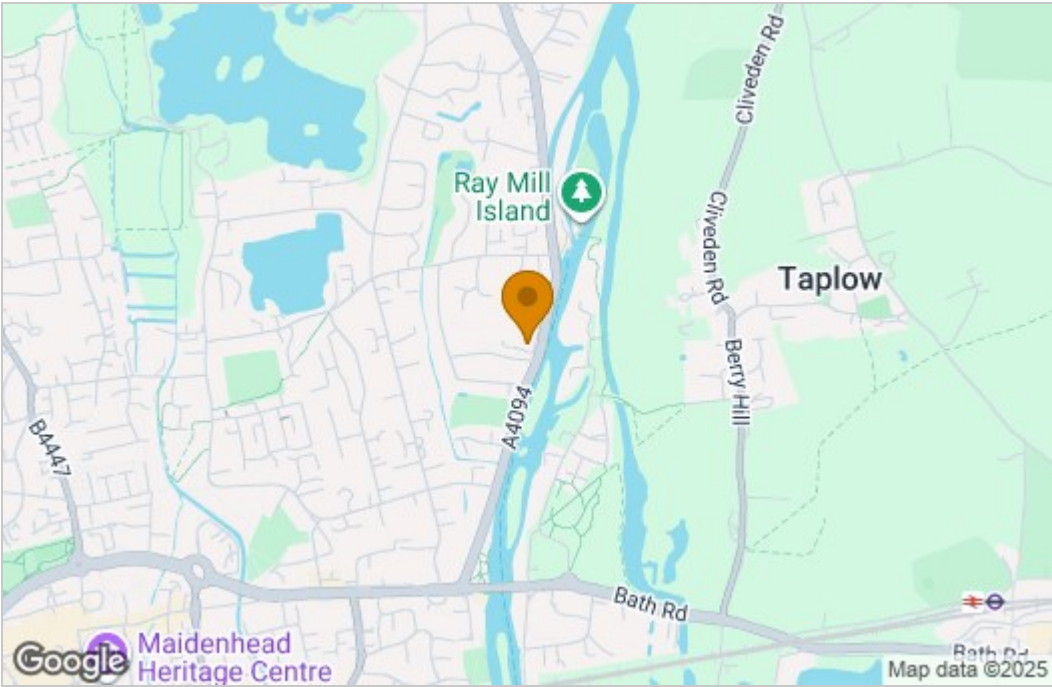
Approximate Floor Area = 85.5 sq m / 920 sq ft

Woodhurst South

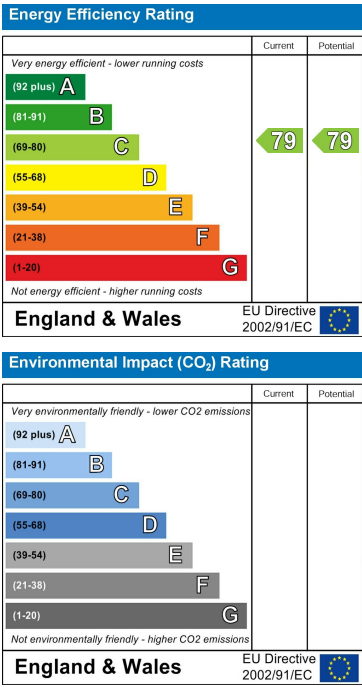
Waterman  
Established 1990



Area Map



Energy Efficiency Graph



These particulars, whilst believed to be accurate are set out as a general outline only for guidance and do not constitute any part of an offer or contract. Intending purchasers should not rely on them as statements of representation of fact, but must satisfy themselves by inspection or otherwise as to their accuracy. No person in this firm's employment has the authority to make or give any representation or warranty in respect of the property.